

# Internal Models - FINMA's experience

Bahnhofkolloquium

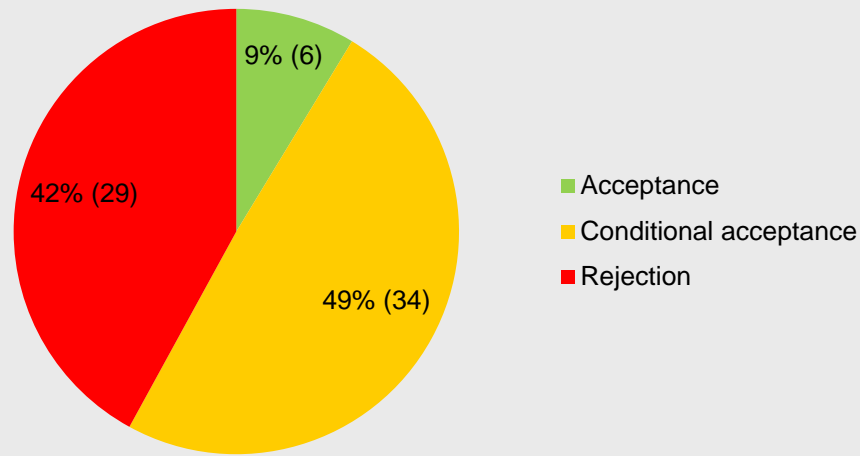
Martin Jakob

March 10 2014

- FINMA has to verify if the model is useful to meet the qualitative, quantitative and organizational requirements.
  1. Result of FINMA's IM-Model review: Report
  2. Discussion of report with company
- Based on 1. and 2., FINMA has to produce a **decree** (either acceptance, conditional acceptance or rejection).
- Problem: Decree is always written in legal terms while the model deals with quantitative modeling and risk measurement.

# Decisions by Dec. 31 2013

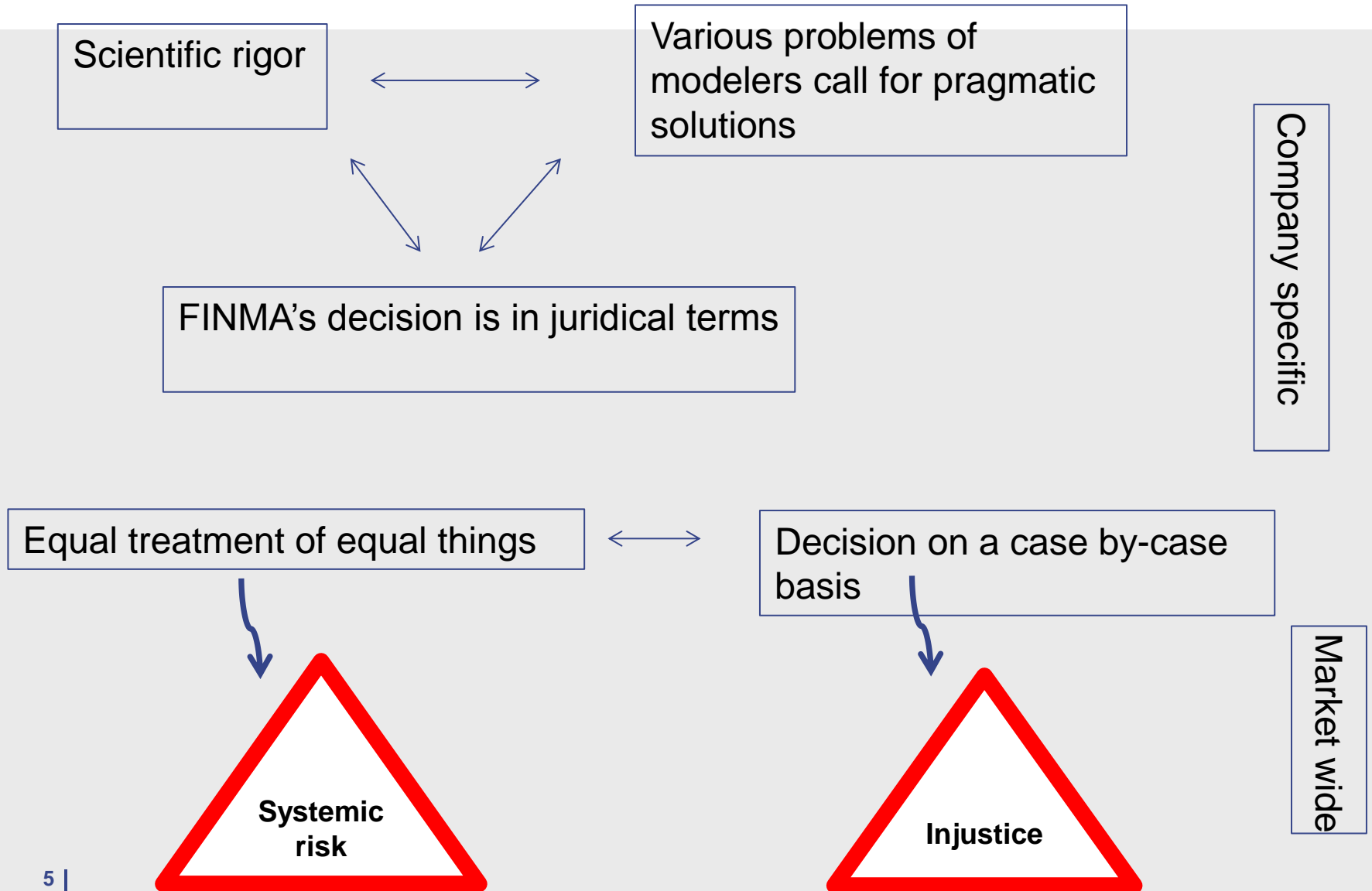
First decisions already communicated to companies (in total)



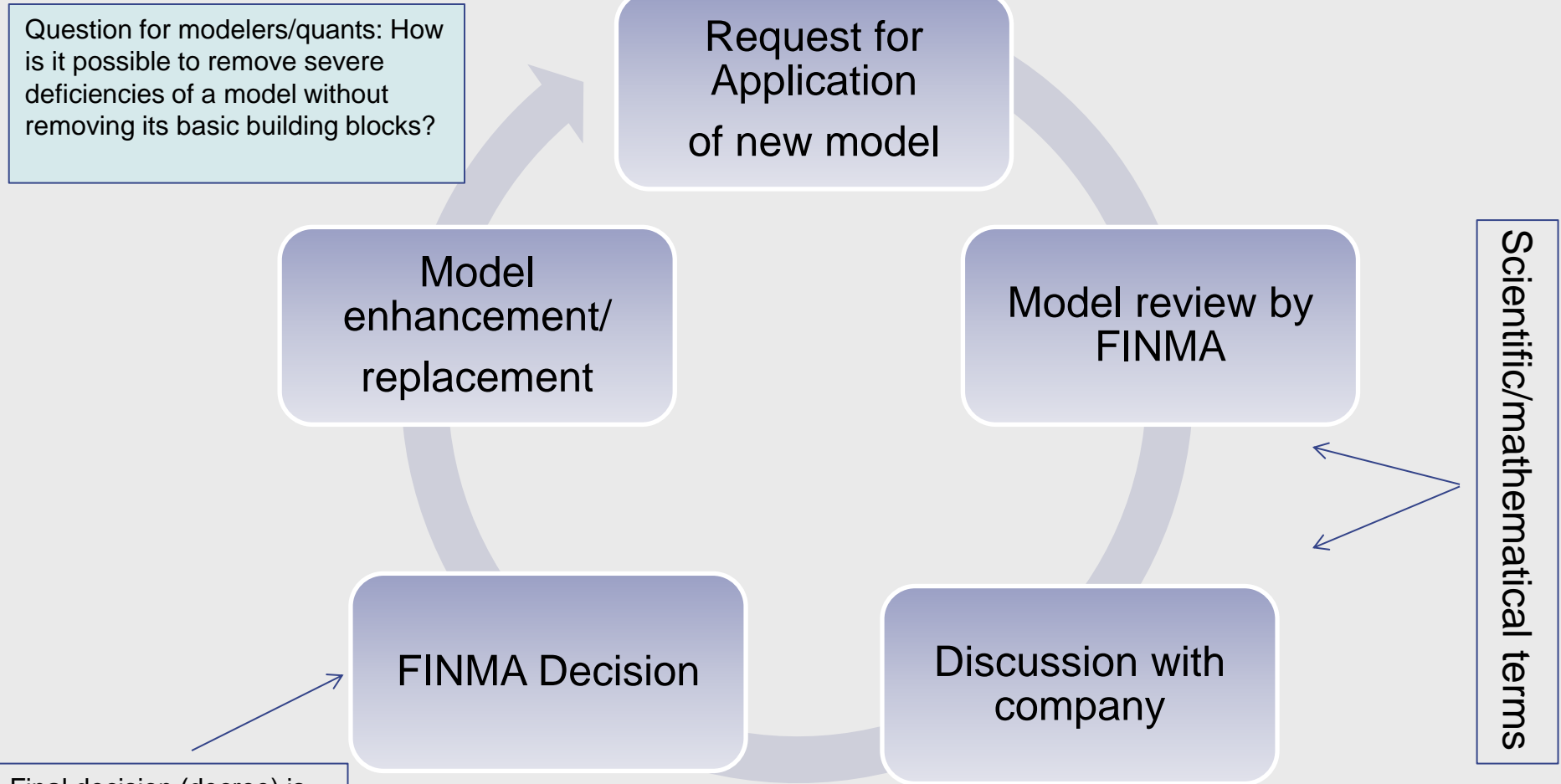
	L	NL	Re	Grp
Acceptance	1	2	2	
Cond. acceptance	8	11	13	2
Rejection	3	9	11	6

- A model change required by FINMA typically affects various domains of a supervised insurer. Depending on the scope of the change it takes time for the company to
  - develop
  - test
  - document
  - communicate internally and to the supervisor
- Therefore FINMA tries to send its new comments / decisions well ahead of next SST phase («no surprise on short notice»).

# Examples of Trade Offs experienced



# Model Evolvment through time



Final decision (decree) is always written in legal terms. 6

- Remember slides earlier presented

## The Importance of Being Consistent

**con-sis-tent** (k&n-'sis-t&nt): marked by harmony, regularity, or steady continuity : free from variation or contradiction

Merriam-Webster Online Dictionary

**For the Swiss regulator, consistency of the SST is key**

### Without consistency:

- results are intransparent, prudence will be implicit
- a layer of economically irrelevant arbitrage instruments will be developed to exploit regulatory inconsistencies

### Main requirements on consistency:

- **between valuation of assets and liabilities**
- **between valuation and risk quantification** 
- **between individual and group level solvency tests**
- **between insurers and reinsurers**
- **between life and nonlife**



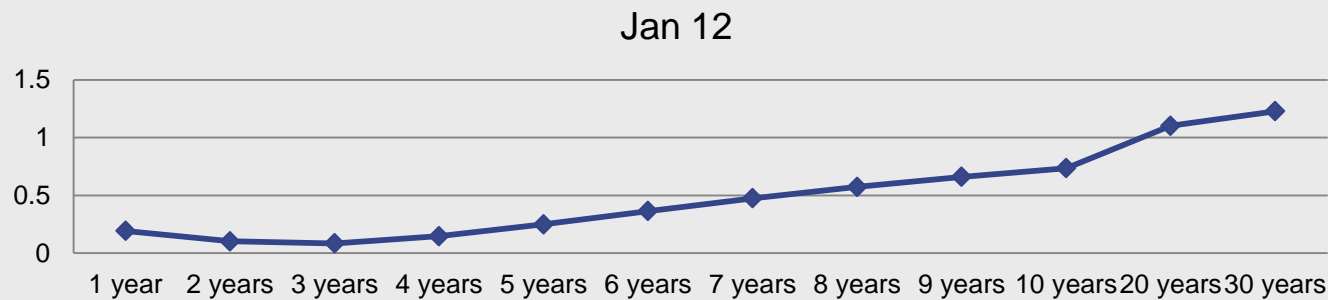
- Important aspect of SST: Valuation of financial instruments has to be done by «methods that are recognized in mathematical finance»
- Some financial instruments used in insurance industry proved to be difficult to value (fundamental questions: freeness of arbitrage, market completeness, replicability of assets and liabilities, calibration issues).
- If valuation is difficult, how much more difficult is it to measure the risks, i.e. the deviation of the value of a position within, say one year's time?

It is FINMA's experience that, at least on a practical level, these problems can be solved.

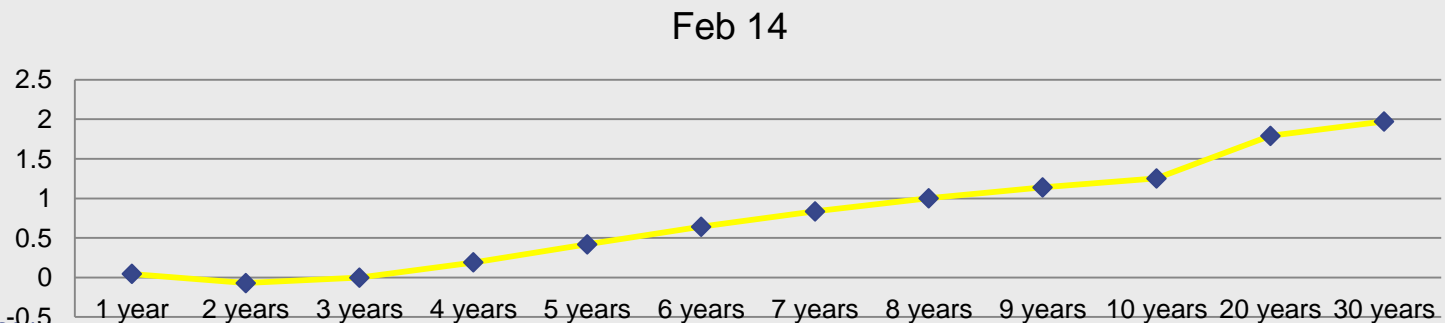
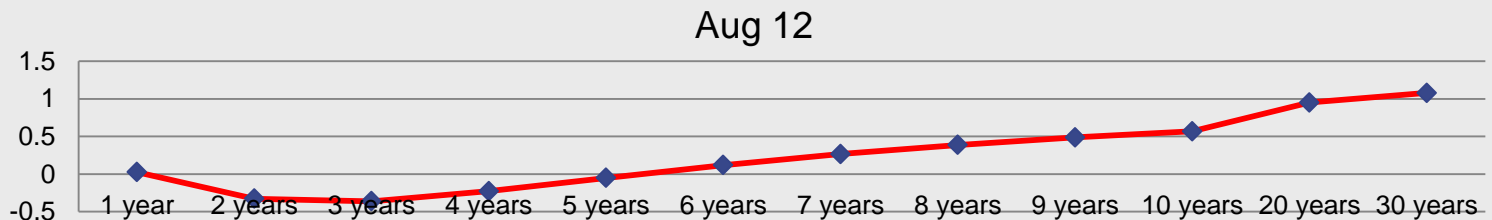


# Risk models and reality

- Which stochastic interest rate models do attribute a strictly positive probability to these risk free zero coupon rates?



Source: SNB



- Difficult wording:

*“In case of the presence in the treaty of the clause called first aggregate deductible, the loss to be ceded through the XoL treaty for the first instalment of one layer is not ceded to the reinsurers but retained by xy company; other reinstalments being ceded to the reinsurers.”*

- Insufficient justification:

*“The Gauss copula is fast and easlily implemented and lends itself to the Monte Carlo studies of risk. [...] This aggregation procedure is widely used in the industry and only depends on the risk dependency structure used in the model [...].”*

- Apart from the well-known fact that the Gaussian copula has weak tail dependency (already apparent in two dimensions) there is another problem:
- *“Assume that there is a sequence  $(\Sigma^{(n)})$  of structural matrices for Gaussian copulas, where  $\Sigma^{(n)}$  is an  $n$ -dimensional positive definite matrix. Further assume that the corresponding sequence of spectra tends to a small set. Then the corresponding sequence of standardized sums of identically distributed random variables that are dependent via the Gaussian copulas tends to follow a normal law.”*

Characteristic function:

$$\varphi(t) = \int_{[0,1]^n} e^{it'q(z)} \cdot \exp\left\{\frac{1}{2}q(z)'[\text{diag}(\sigma_1^{-2}, \dots, \sigma_n^{-2}) - \Sigma^{(n)}]q(z)\right\} \frac{\prod \sigma_i}{|\Sigma^{(n)}|^{1/2}} dz_1 \wedge \dots \wedge dz_n$$

- With SST we have a reasonable framework to assess the risk of an insurance company in a *holistic* way (for small, mid sized and large entities and groups, all types of insurers)
- Possibility to use internal models gives incentives for insurers to understand their own risks and to measure them.
- However, a principle-based and risk-oriented approach has its price:

Internal model review is demanding for all people involved

Not all questions are settled (some not even theoretically)

Time consuming w.r.t. processes and discussions

- Avoid going back to rule-based procedures
- Rule based risk assessment means
  - Focusing on compliance rather than on understanding underlying risks
  - Inconsistency
  - Incentives to arbitrage
  - Systemic risk

[martin.jakob@finma.ch](mailto:martin.jakob@finma.ch)

Swiss Financial Market Supervisory Authority FINMA  
Einsteinstrasse 2  
CH-3003 Bern

[info@finma.ch](mailto:info@finma.ch)  
[www.finma.ch](http://www.finma.ch)